




Monomando ducha mural 2 vías / Wall-mounted shower mixer 2 ways / Mitigeur de douche mural 2 voies / Torneira de chuveiro mural 2 caminhos / Monocomando doccia murale 2 vie

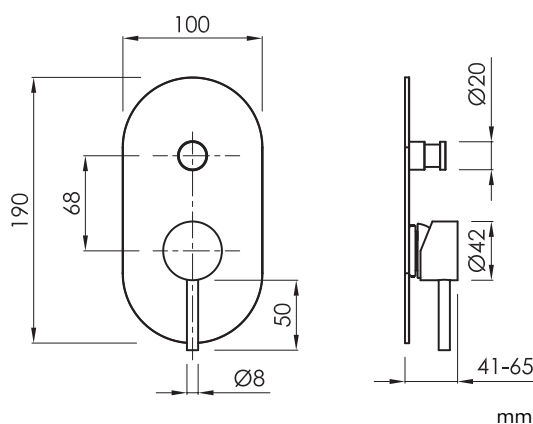
Acabados / Finishes / Finition / Acabamento / Finitura

| | | | | | |
|--|---|---|---|---|--|
|  | Cromado Chromed Chromé Cromado Cromato |  | Negro mate Black matt Noir mat Preto mate Nero opaco |  | Metal gun Metal gun Metal gun Metal gun Metal gun |
| CR | | BM | | MG | |
|  | Níquel cepillado Nickel brushed Nickel brossé Níquel escovado Nichel spazzolato |  | Oro cepillado Brushed gold Or brossé Ouro escovado Oro spazzolato |  | Oro rosa cepillado Brushed rose gold Or rose brossé Ouro rosa escovado Oro rosa spazzolato |
| NB | | BG | | RG | |



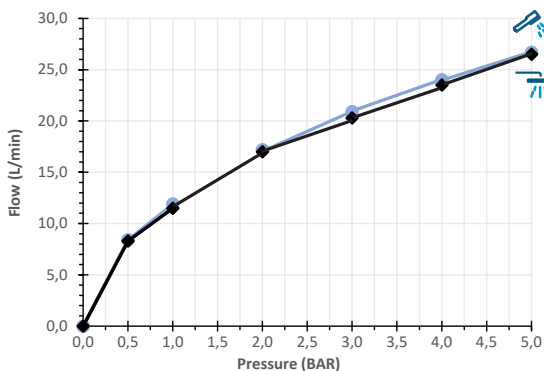
Características / Features / Caractéristiques / Características / Caratteristiche

| | | | |
|---|---|---|--|
|  | Monomando Mixer Mitigeur Torneira Monocomando |  | PVD con tratamiento antihuella Anti-fingerprint PVD PVD avec traitement anti-fingerprint PVD con trattamento anti-impronta PVD com tratamento anti-impressão digital |
|  | 2 vías 2 ways 2 voies 2 caminhos 2 vie | | |



Debe acompañarse con el cuerpo de empotrar **sanybox** correspondiente.
Must be accompanied by the corresponding concealed body **sanybox**.
Doit être accompagnée du corps encastré **sanybox** correspondant.
Deve ser acompanhado com o corpo de incorporação **sanybox** correspondente.
Deve essere accompagnato dal corpo da incasso **sanybox** corrispondente.

Caudal / Flow rate / Débit / Fluxo / Flusso





Presión mínima de funcionamiento 1 BAR
Minimum operating pressure 1 BAR
Pression de travail minimale 1 BAR
Pressão mínima de trabalho 1 BAR
Pressione minima di lavoro 1 BAR

| ref. | P kg | P' kg | V cmxcmxcm |
|----------|------|-------|------------|
| ME2001.. | 0,50 | 0,70 | 20,5x11x10 |

P: Peso neto / Net weight / Poids net / Peso líquido / Peso netto

P': Peso de expedición / Expedition Weight / Poids d'expédition / Peso do expedição / Peso spedizione

V: Volumen de expedición / Expedition Volume / Volume d'expédition / Volume do expedição / Volume spedizione

| Pressure (BAR) | | 0 | 1 | 2 | 3 | 4 | 5 |
|-------------------|---|---|------|------|------|------|------|
| Flow rate (l/min) |  | 0 | 11,5 | 17,0 | 20,3 | 23,5 | 26,5 |
| Flow rate (l/min) |  | 0 | 11,9 | 17,2 | 20,9 | 24,0 | 26,7 |