




Monomando ducha mural 2 vías / Wall-mounted shower mixer 2 ways / Mitigeur de douche mural 2 voies / Torneira de chuveiro mural 2 caminhos / Monocomando doccia murale 2 vie

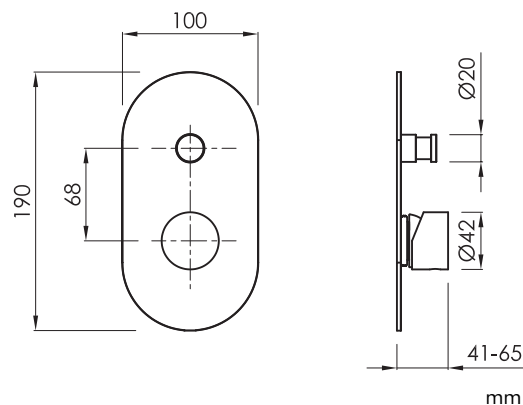
Acabados / Finishes / Finition / Acabamento / Finitura

	Cromado Chromed Chromé Cromado Cromato		Negro mate Black matt Noir mat Preto mate Nero opaco		Metal gun Metal gun Metal gun Metal gun Metal gun
CR		BM		MG	
	Níquel cepillado Nickel brushed Nickel brossé Níquel escovado Nichel spazzolato		Oro cepillado Brushed gold Or brossé Ouro escovado Oro spazzolato		Oro rosa cepillado Brushed rose gold Or rose brossé Ouro rosa escovado Oro rosa spazzolato
NB		BG		RG	



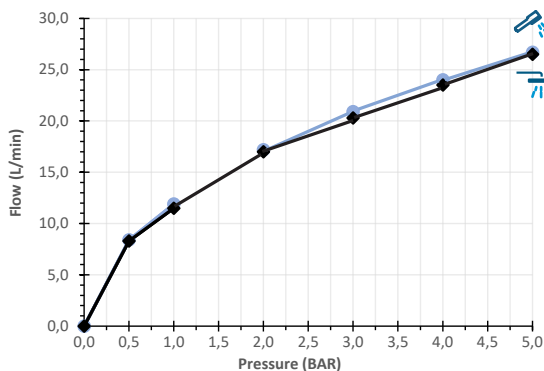
Características / Features / Caractéristiques / Características / Caratteristiche

	Monomando Mixer Mitigeur Torneira Monocomando		PVD con tratamiento antihuella Anti-fingerprint PVD PVD avec traitement anti-fingerprint PVD con trattamento anti-impronta PVD com tratamento anti-impressão digital
	2 vías 2 ways 2 voies 2 caminhos 2 vie		



Debe acompañarse con el cuerpo de empotrar **sanybox** correspondiente.
Must be accompanied by the corresponding concealed body **sanybox**.
Doit être accompagnée du corps encastré **sanybox** correspondant.
Deve ser acompanhado com o corpo de incorporação **sanybox** correspondente.
Deve essere accompagnato dal corpo da incasso **sanybox** corrispondente.

Caudal / Flow rate / Débit / Fluxo / Flusso





Presión mínima de funcionamiento 1 BAR
Minimum operating pressure 1 BAR
Pression de travail minimale 1 BAR
Pressão mínima de trabalho 1 BAR
Pressione minima di lavoro 1 BAR

ref.	P kg	P' kg	V cmxcmxcm
ME2011...	0,50	0,70	20,5x11x10

P: Peso neto / Net weight / Poids net / Peso líquido / Peso netto

P': Peso de expedición / Expedition Weight / Poids d'expédition / Peso do expedição / Peso spedizione

V: Volumen de expedición / Expedition Volume / Volume d'expédition / Volume do expedição / Volume spedizione

Pressure (BAR)		0	1	2	3	4	5
Flow rate (l/min)		0	11,5	17,0	20,3	23,5	26,5
Flow rate (l/min)		0	11,9	17,2	20,9	24,0	26,7