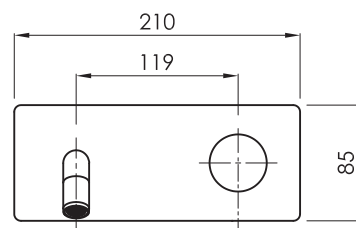







Monomando lavabo mural / Wall-mounted basin mixer / Mitigeur de lavabo mural / Torneira de lavatório mural / Monocomando lavabi murale

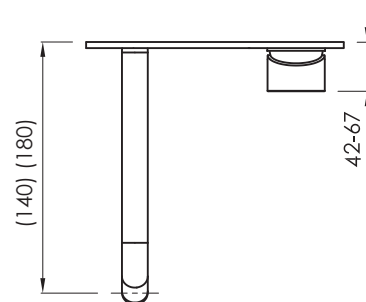
Acabados / Finishes / Finition / Acabamento / Finitura

	Cromado Chromed Chromé Cromado Cromato		Negro mate Black matt Noir mat Preto mate Nero opaco		Metal gun Metal gun Metal gun Metal gun Metal gun
CR		BM		MG	
	Níquel cepillado Nickel brushed Nickel brossé Níquel escovado Nichel spazzolato		Oro cepillado Brushed gold Or brossé Ouro escovado Oro spazzolato		Oro rosa cepillado Brushed rose gold Or rose brossé Ouro rosa escovado Oro rosa spazzolato
NB		BG		RG	



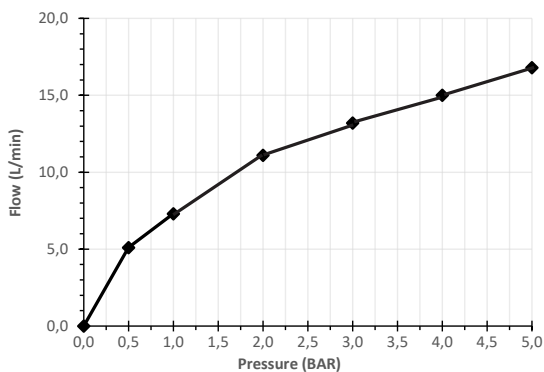
Características / Features / Caractéristiques / Características / Caratteristiche

-  Apertura en frío  
Cold open  
Ouverture en eau froide  
Abertura fria  
Apertura a freddo
-  PVD con tratamiento antihuella  
Anti-fingerprint PVD  
PVD avec traitement anti-fingerprint  
PVD con trattamento anti-impronta  
PVD com tratamento anti-impressão digital
-  Ahorro de energía  
Energy saving  
Économie d'énergie  
Economia de energia  
Risparmio energetico
-  Cartucho KEROX  
KEROX cartridge  
Cartouche KEROX  
Cartucho KEROX  
Cartuccia KEROX
-  Aireador NEOPERL®  
NEOPERL® aerator  
Aérateur NEOPERL®  
Aerador NEOPERL®  
Aeratore NEOPERL®

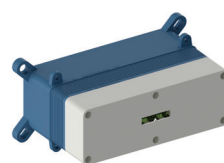


mm

Caudal / Flow rate / Débit / Fluxo / Flusso



Pressure (BAR)	0	0,5	1	2	3	4	5
Flow rate (l/min)	0	5,1	7,3	11,1	13,2	15,0	16,8



MEN000

Debe acompañarse con el cuerpo de empotrar **sanybox** correspondiente.  
Must be accompanied by the corresponding concealed body **sanybox**.  
Doit être accompagnée du corps encasturé **sanybox** correspondant.  
Deve ser acompanhado com o corpo de incorporação **sanybox** correspondente.  
Deve essere accompagnato dal corpo da incasso **sanybox** corrispondente.

ref.	P kg	P' kg	V cmxcmxcm
MEN001S14..	0,50	0,70	22x8,5x3,3
MEN001S18..	0,50	0,70	22x8,5x3,3

P: Peso neto / Net weight / Poids net / Peso líquido / Peso netto

P': Peso de expedición / Expedition Weight / Poids d'expédition / Peso do expedição / Peso spedizione

V: Volumen de expedición / Expedition Volume / Volume d'expédition / Volume do expedição / Volume spedizione