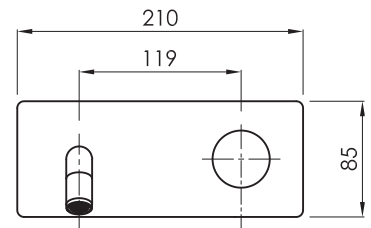







Monomando lavabo mural / Wall-mounted basin mixer / Mitigeur de lavabo mural / Torneira de lavatório mural / Monocomando lavabi murale

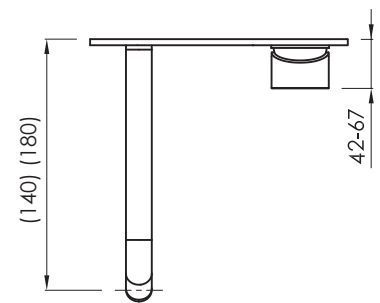
Acabados / Finishes / Finition / Acabamento / Finitura

 Cromado Chromed Chromé Cromado Cromato CR	 Negro mate Black matt Noir mat Preto mate Nero opaco BM	 Metal gun Metal gun Metal gun Metal gun Metal gun MG
 Níquel cepillado Nickel brushed Nickel brossé Níquel escovado Nichel spazzolato NB	 Oro cepillado Brushed gold Or brossé Ouro escovado Oro spazzolato BG	 Oro rosa cepillado Brushed rose gold Or rose brossé Ouro rosa escovado Oro rosa spazzolato RG



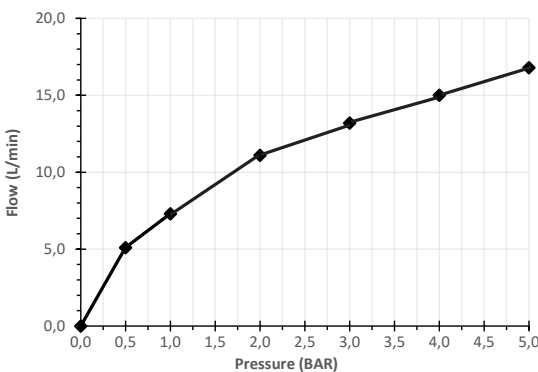
Características / Features / Caractéristiques / Características / Caratteristiche

-  Apertura en frío
Cold open
Ouverture en eau froide
Abertura fria
Apertura a freddo
-  PVD con tratamiento antihuella
Anti-fingerprint PVD
PVD avec traitement anti-fingerprint
PVD con trattamento anti-impronta
PVD com tratamento anti-impressão digital
-  Ahorro de energía
Energy saving
Économie d'énergie
Economia de energia
Risparmio energetico
-  Cartucho KEROX
KEROX cartridge
Cartouche KEROX
Cartucho KEROX
Cartuccia KEROX
-  Aireador NEOPERL®
NEOPERL® aerator
Aérateur NEOPERL®
Aerador NEOPERL®
Aeratore NEOPERL®

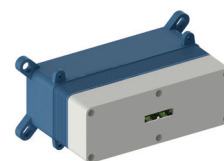


mm

Caudal / Flow rate / Débit / Fluxo / Flusso



Pressure (BAR)	0	0,5	1	2	3	4	5
Flow rate (l/min)	0	5,1	7,3	11,1	13,2	15,0	16,8



MEN000

Debe acompañarse con el cuerpo de empotrar **sanybox** correspondiente.
Must be accompanied by the corresponding concealed body **sanybox**.
Doit être accompagnée du corps encastré **sanybox** correspondant.
Deve ser acompanhado com o corpo de incorporação **sanybox** correspondente.
Deve essere accompagnato dal corpo da incasso **sanybox** corrispondente.

ref.	P kg	P' kg	V cmxcmxcm
MEN011S14...	0,50	0,70	22x8,5x3,3
MEN011S18...	0,50	0,70	22x8,5x3,3

P: Peso neto / Net weight / Poids net / Peso líquido / Peso netto

P': Peso de expedición / Expedition Weight / Poids d'expédition / Peso do expedição / Peso spedizione

V: Volumen de expedición / Expedition Volume / Volume d'expédition / Volume do expedição / Volume spedizione