

sanybox para monomando horizontal 2 vías mural / Horizontal wall-mounted mixer 2 way sanybox / sanybox pour mitigeur horizontal 2 voies mural / sanybox para misturador horizontal de parede de 2 vías / sanybox per miscelatore orizzontale a parete a 2 vie

Características / Features / Características / Características / Caratteristiche



Cuerpo encastre universal  
Universal concealed body  
Corps d'encastrement universel  
Corpo de embutir universal  
Corpo incasso universale



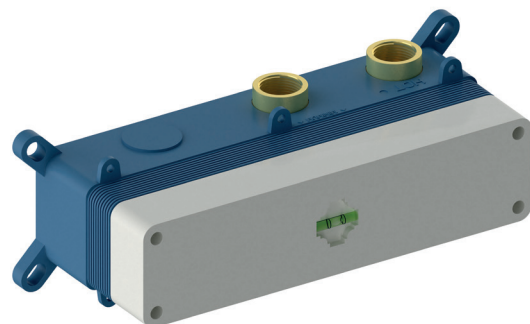
Monomando  
Mixer  
Mitigeur  
Torneira  
Monocomando



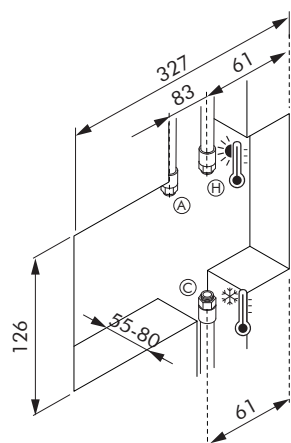
2 vía  
2 way  
2 voie  
2 caminho  
2 via



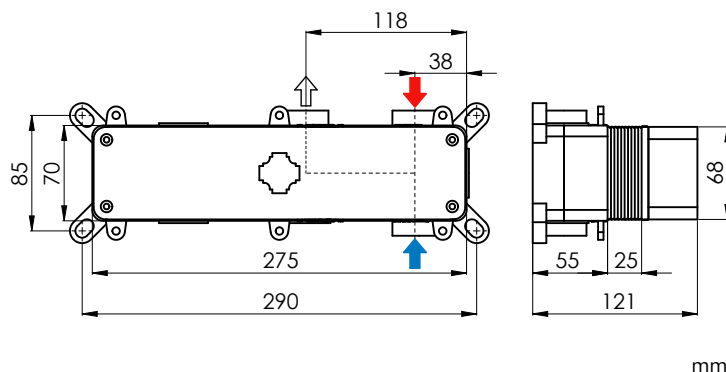
Conexiones 3/4" hembra latn  
Connections 3/4" female brass  
Raccordements 3/4" laiton femelle  
Conexes 3/4" lato fmea  
Connessioni 3/4" ottone femminile



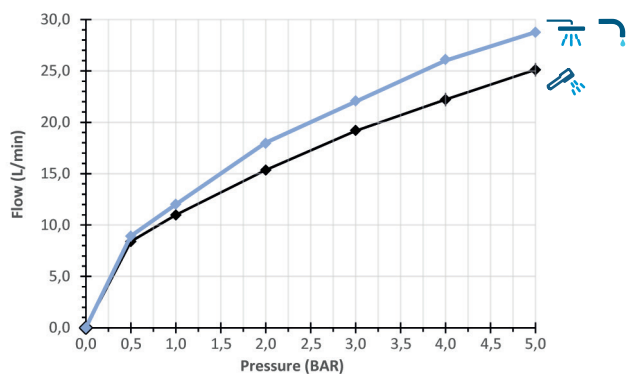
Preinstalacin / Pre-installation / Pr-installation / Pr-instalao / Preinstallazione



- Ⓒ Agua fra / Cold water / Eau froide / gua fra / Acqua fredda 3/4"
- Ⓗ Agua caliente / Hot water / Eau chaude / gua quente / Acqua calda 3/4"
- Ⓐ Salida / Exit / Sortie / Saída / Us-cita 3/4"



Caudal / Flow rate / Dbit / Fluxo / Flusso



ref.	P kg	P' kg	V cmxcmxcm
MH2000	1,20	1,60	32,5x10,8x13,5

P: Peso neto / Net weight / Poids net / Peso lquido / Peso netto

P': Peso de expedicin / Expedition Weight / Poids d'expdition / Peso do expedio / Peso spedizione

V: Volumen de expedicin / Expedition Volume / Volume d'expdition / Volume do expedio / Volume spedizione

Pressure (BAR)	0	0,5	1	2	3	4	5
Flow rate (l/min)	0	8,3	11,3	15,9	19,1	22,6	25,5
Flow rate (l/min)	0	9,2	13	18,6	22,8	26,2	28,7