

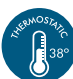






Termostático exterior para ducha / Exposed shower thermostatic mixer / Thermostatique de douche exterieur / Termostática externo para duche / Termostatica esterno per doccia

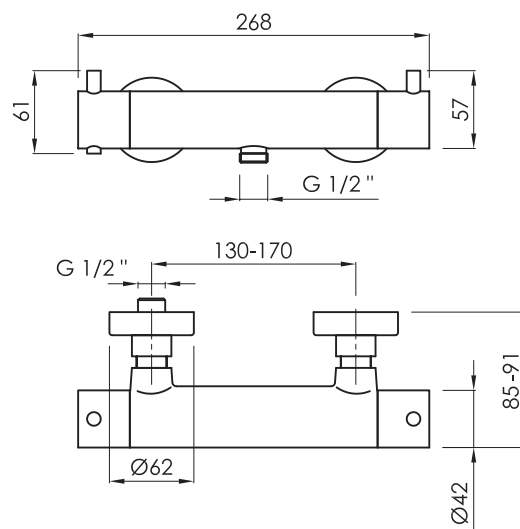
Acabados / Finishes / Finition / Acabamento / Finitura

 Cromado Chromed Chromé Cromado Cromato	 Negro mate Black matt Noir mat Preto mate Nero opaco	 Metal gun Metal gun Metal gun Metal gun Metal gun
 Níquel cepillado Nickel brushed Nickel brossé Níquel escovado Nichel spazzolato	 Oro cepillado Brushed gold Or brossé Ouro escovado Oro spazzolato	 Oro rosa cepillado Brushed rose gold Or rose brossé Ouro rosa escovado Oro rosa spazzolato
CR	BM	MG
NB	BG	RG



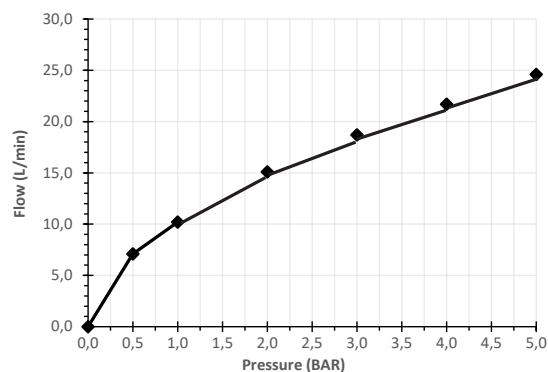
Características / Features / Caractéristiques / Características / Caratteristiche

 Mezclador termostático Thermostatic mixer Melangeur thermostatique Torneira termostática Monocomando termostatica	 PVD con tratamiento antihuella Anti-fingerprint PVD PVD avec traitement anti-impronta PVD con trattamento anti-impronta PVD com tratamento anti-impressão digital
 Sistema safe touch Safe touch body Système safe touch Sistema safe touch Sistema safe touch	 Antirretornos NEOPERL® NEOPERL® check valves Anti-retours NEOPERL® Anti-retorno NEOPERL® Anti-ritorni NEOPERL®
 Cartucho SEDAL® SEDAL® cartridge Cartouche SEDAL® Cartucho SEDAL® Cartuccia SEDAL®	 Flexo 1,5m PVC 1,5 m PVC hose Flexible 1,5m PVC Manguera de chuveiro 1,5m PVC Flessibile 1,5m PVC
 Teleducha de latón Brass handshower Douchette à main en laiton Chuveiro de mão de latão Doccetta in ottone	



mm

Caudal / Flow rate / Débit / Fluxo / Flusso



ref.	P kg	P' kg	V cmxcmxcm
TDU011...	1,30	1,60	38x9x7
TDU011...K	1,30	1,60	30x24x7

P: Peso neto / Net weight / Poids net / Peso líquido / Peso netto

P': Peso de expedición / Expedition Weight / Poids d'expédition / Peso do expedição / Peso spedizione

V: Volumen de expedición / Expedition Volume / Volume d'expédition / Volume do expedição / Volume spedizione

Pressure (BAR)	0	0,5	1	2	3	4	5
Flow rate (l/min)	0	7,1	10,2	15,1	18,7	21,7	24,6